
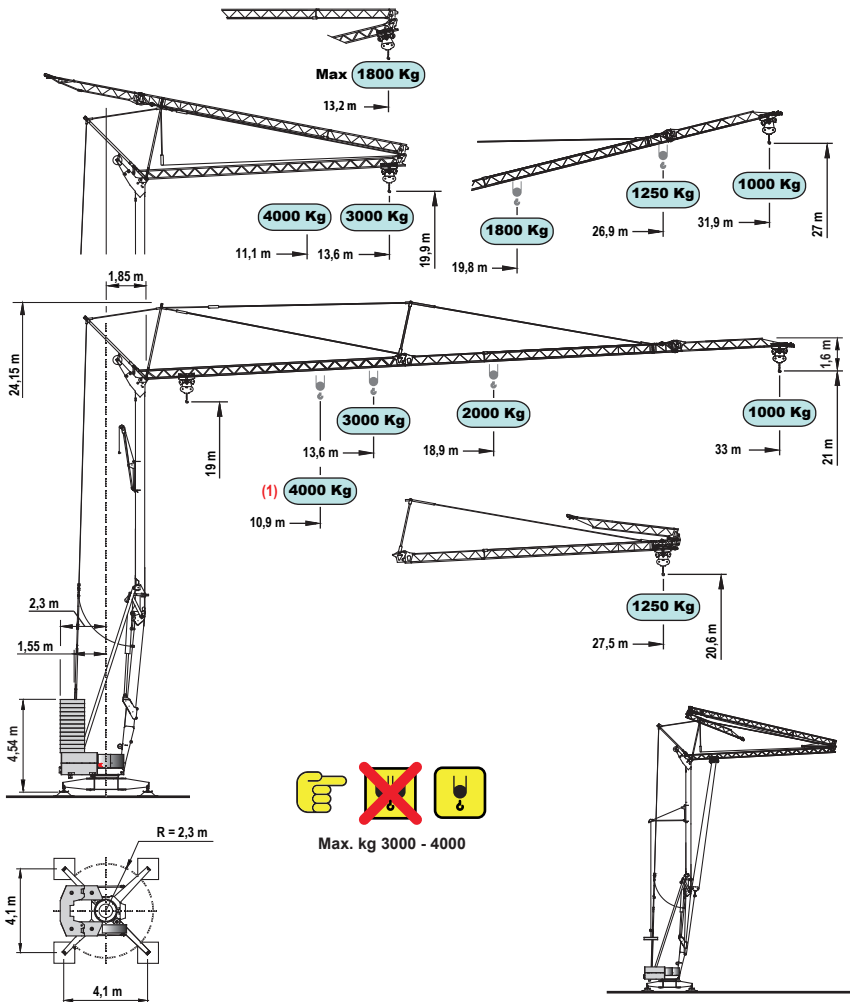


CM 82S4 serie performance

Gru idraulica a montaggio rapido

Gru automontanti - CM82S4

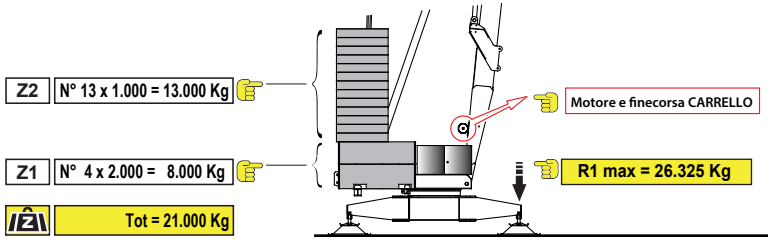
 Nessun componente elettrico sul braccio e sulle parti alte della gru



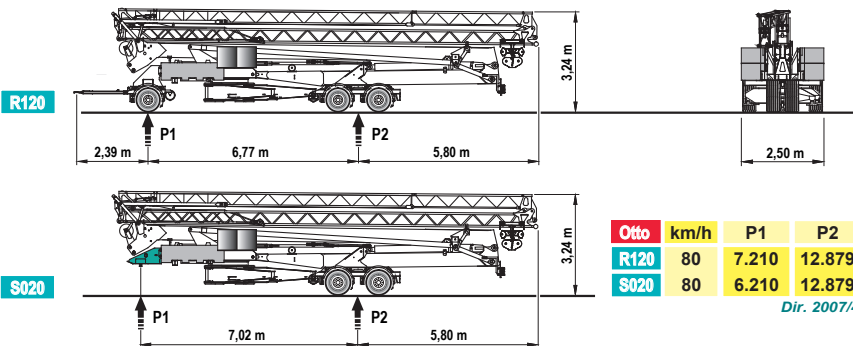
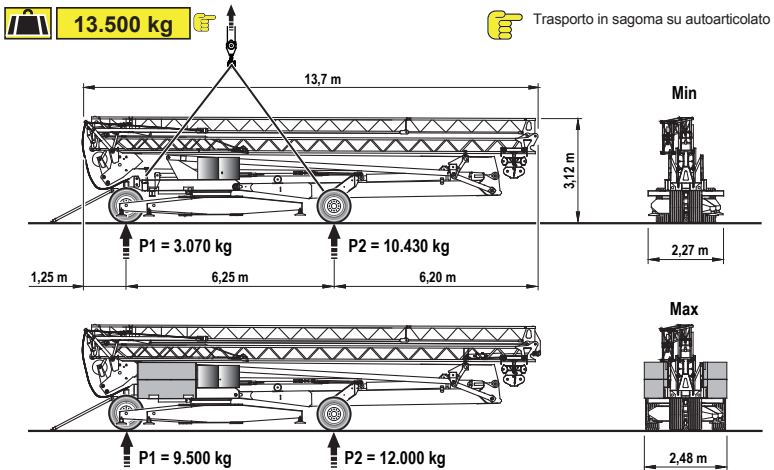
Curve di carico

kg	4000	3500	3000	2500	2000	1900	1800	1700	1600	1500	1400	1300	1250	1100	1000
m	10.9	12.1	13.7	15.8	18.9	19.7	20.6	21.5	22.6	23.9	25.2	26.9	27.5	30.6	33.0
m	11.1	12.3	13.9	16.0	19.1	19.9	20.8	21.7	22.8	24.1	25.4	27.0	27.5		
m							19.8	20.9	21.9	23.1	24.4	25.9	26.9	29.6	31.9

Contrappeso in lastre di cemento armato



Trasporto



Specifiche suscettibili di variazioni senza preavviso