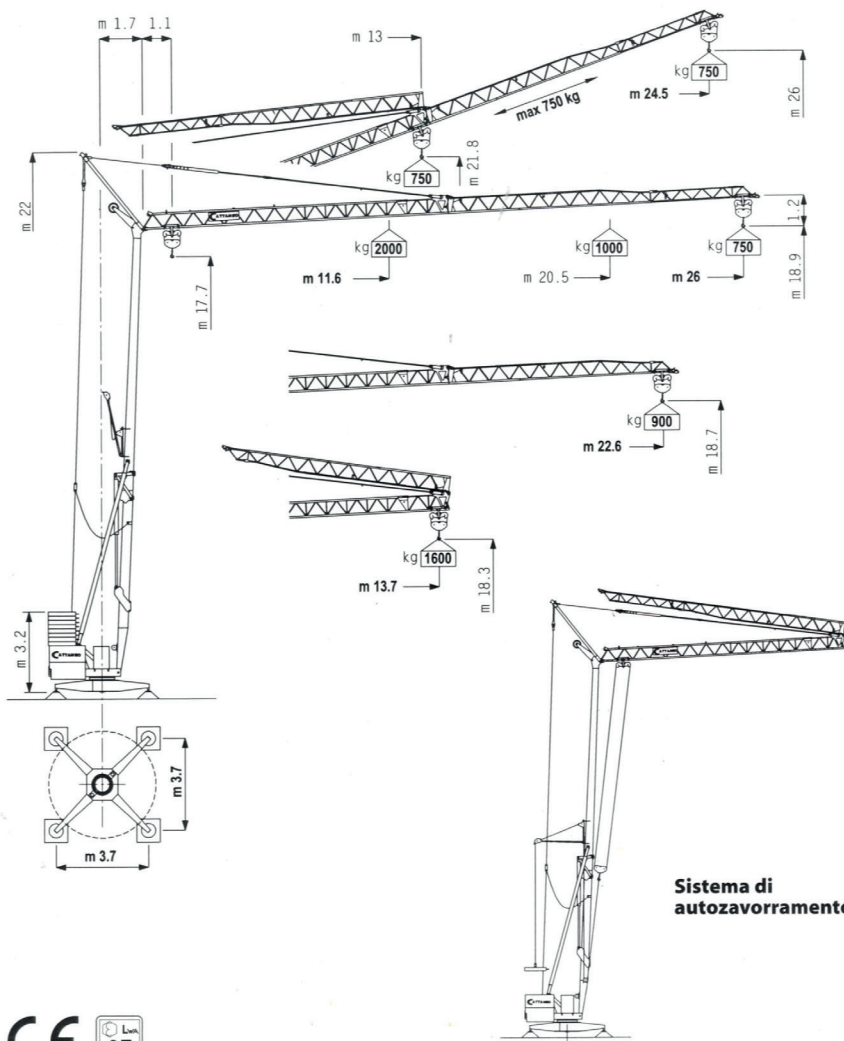


CM 76A serie modulare

Gru idraulica a montaggio rapido





Gru automontanti - CM76A



Curve di carico

kg	2000	1800	1600	1400	1200	1000	900	750
m	11.6	12.7	14.0	15.6	17.7	20.5	22.4	26.0
m	11.7	12.8	14.1	15.7	17.8	20.7	22.6	

Prestazioni

		1°	2°	3°	CV	kW
 Sollevamento Hoisting Levage Hubwerk Elevation	m/1'	5	21	42	9	6,6
	kg	2000	2000	1000		
 Carrello - Trolley Chariot - Katzfahrwerk Carro	m/1'	23 - 46			1,8	1,3
 Rotazione - Slewing Orientation - Drehwerk Rotación	g/1'	0 → 0,4 → 0,9 inverter			3	2,2
 Potenza elettrica necessaria Necessary electric power Puissance électrique nécessaire Anschlusswert Potencia eléctrica necesaria	kVA	12			400 V-50Hz	

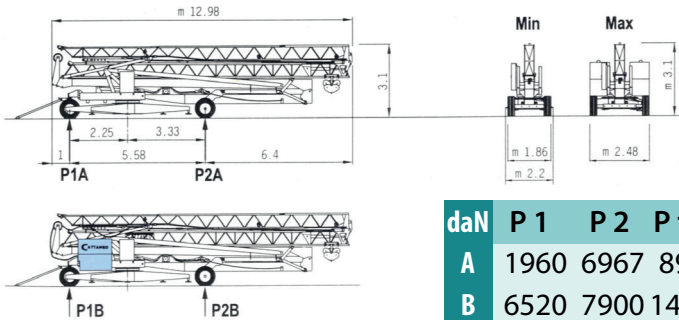
Contrappeso in lastre di cemento armato



Massa gru (con assale da cantiere) kg 9.100

Massa contrappeso kg 13.400 - 14.400

Trasporto



Specifiche suscettibili di variazioni senza preavviso