
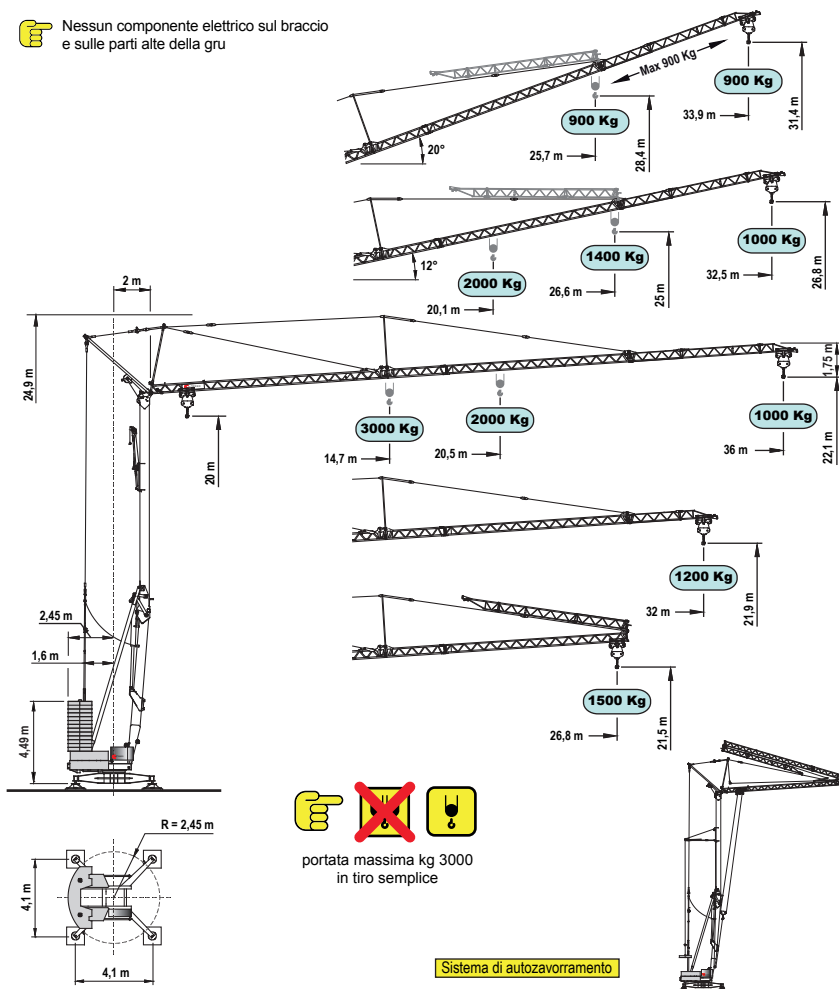


CM 75S4 serie performance

Gru idraulica a montaggio rapido

Gru automontanti - CM75S4

 Nessun componente elettrico sul braccio e sulle parti alte della gru

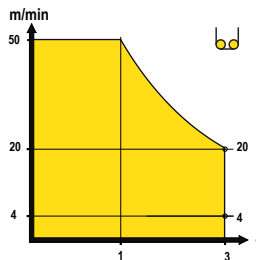


Curve di carico

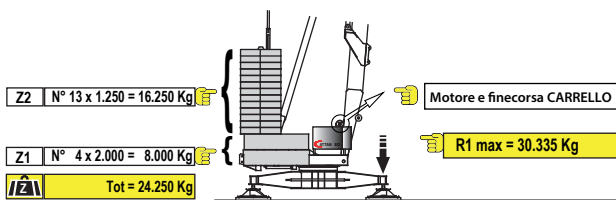
kg	3000	2500	2000	1900	1800	1700	1600	1500	1400	1300	1200	1100	1000
m	14.7	17.1	20.5	21.4	22.4	23.4	24.6	26.0	27.5	29.2	31.1	33.3	36.0
m	15.1	17.5	21.0	21.9	22.9	24.1	25.3	26.7	28.2	30.0	32.0		
m	15.1	17.6	21.0	22.0	23.0	24.1	25.4	26.8	28.2	30.5	32.7		
m			20.1	21.0	21.9	23.0	24.1	25.4	26.9	28.6	30.5	32.7	35.2

Prestazioni

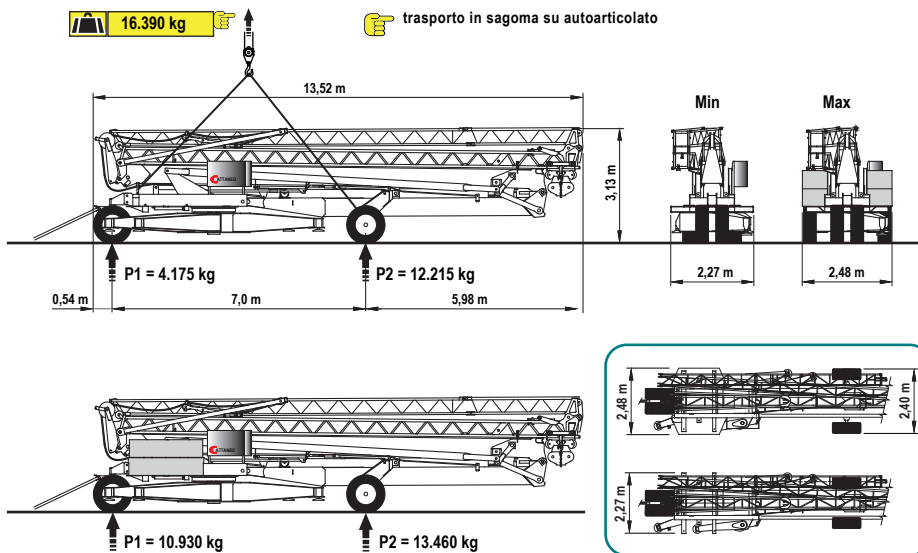
		kW	400V - 50Hz 16 kW					
	inverter	kW/g/min		1°	2°	3°	4°	
				m/min	4	20	35	50
				kg	3000	3000	2000	1000
	inverter	3/1400	m/min 25 - 50					
	inverter	3,7/900	g/min 0,3 - 0,9					



Contrappeso in lastre di cemento armato



Trasporto



Specifiche suscettibili di variazioni senza preavviso