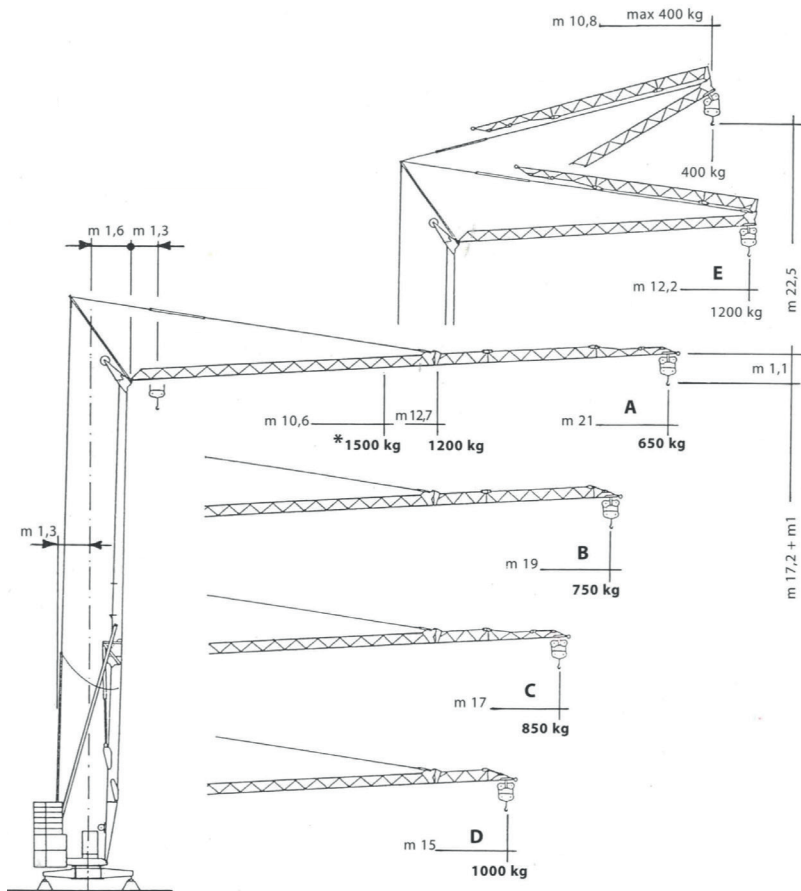


CM 73 serie modulare

Gru idraulica a montaggio rapido

Gru automontanti - CM73






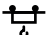
380V

220/380V

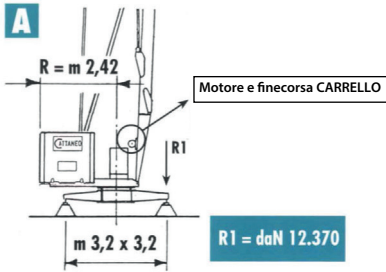
Curve di carico

	kg	1500	1400	1300	1200	1100	1000	850	750	650
A	m	10.6	11.2	11.9	12.7	13.7	14.8	17.0	19.0	21.0
B	m	10.6	11.1	11.9	12.7	13.7	14.8	17.0	19.0	
C	m	10.6	11.2	11.9	12.7	13.7	14.8	17.0		
D	m	10.6	11.1	11.9	12.7	13.7	15.0			
E	m	10.6	11.2	11.9	12.2					

Prestazioni

		Versione trifase				Versione monotrifase				
		380 V - 50 Hz		kVA		220/380 V - 50 Hz		kVA		
		potenza elettrica necessaria		10		potenza elettrica necessaria		 3  5		
		1°	2°	3°	kW	1°	2°	3°	kW	
 Sollevamento	m/1'	8.5	17	34	4.4	m/1'	7	15	21	3
	kg	1.500	1.500	700		m/1'	7	15	27	
 Carrello	m/1'	25 - 50			1,2	m/1'	25			1,2
	g/1'	0 : 1 inverter			1,5	g/1'	0 : 1 inverter			0,75

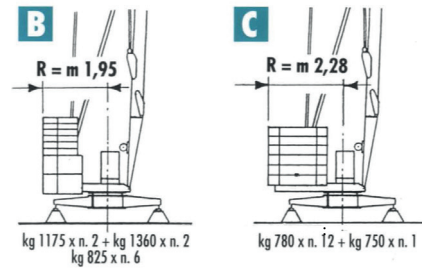
Cassoni portazavorra in cemento armato



R1 = daN 12.370

Massa gru (con assale da cantiere) kg 6.500

Contrappeso in lastre di cemento armato



Massa contrappeso kg 10.000 - 11.400

