
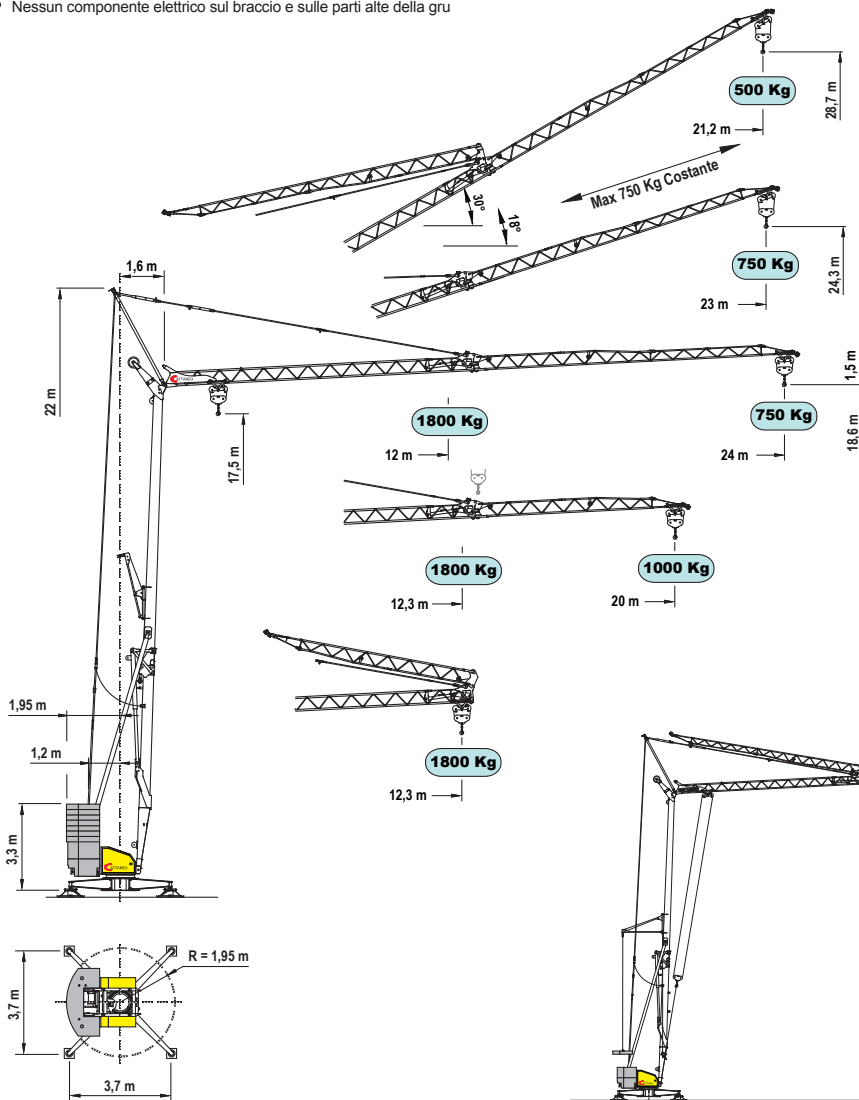


CM 71A

Gru idraulica a montaggio rapido

Gru automontanti - CM71A

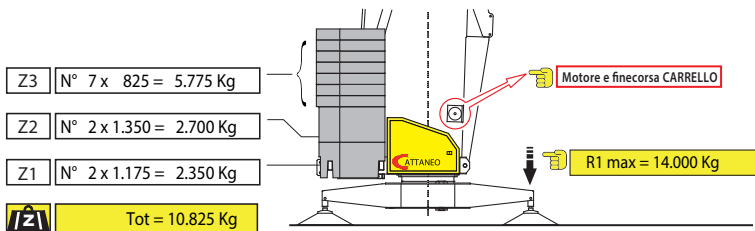
 Nessun componente elettrico sul braccio e sulle parti alte della gru



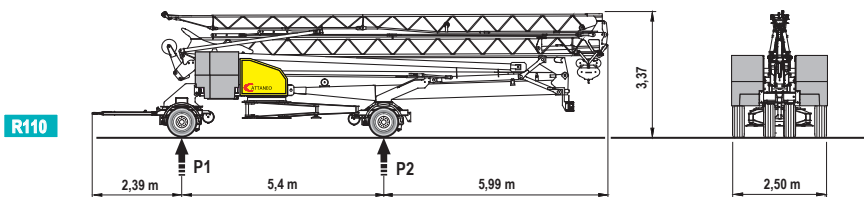
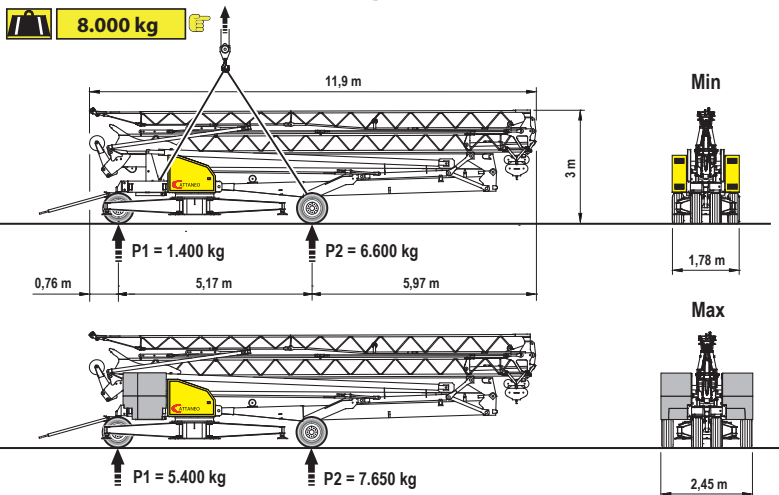
Curve di carico

	1800	1600	1400	1200	1000	900	750
kg	1800	1600	1400	1200	1000	900	750
m	12.0	12.9	14.4	16.3	18.9	20.6	24.0
m	12.3	13.5	15.1	17.2	20.0		
m	12.3						

Contrappeso in lastre di cemento armato



Trasporto



Otto	km/h	P1	P2
R110	80	6.836	8.214 kg

Dir. 2007/46/CE

Specifiche suscettibili di variazioni senza preavviso