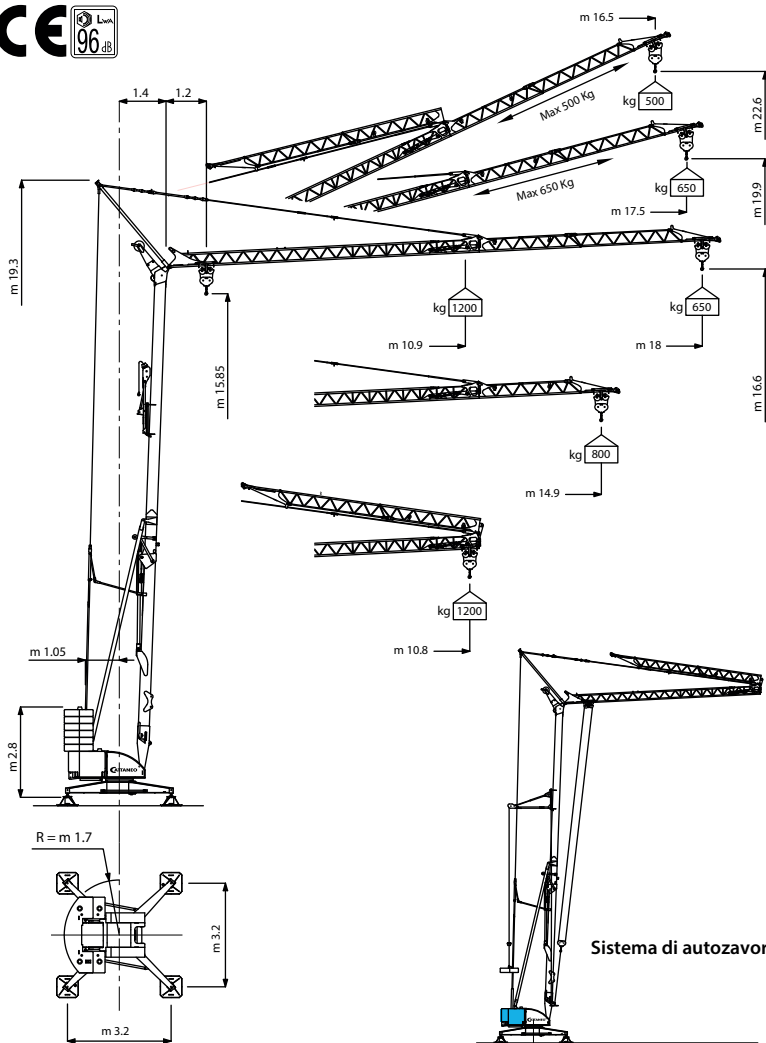


# CM 61S2 serie modulare







## Gru idraulica a montaggio rapido



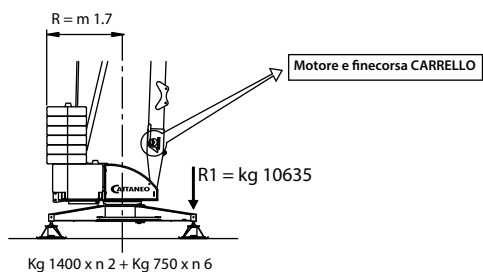
### Curve di carico

kg	1200	1150	1100	1050	1000	950	900	850	800	750	700	650
m	10.9	11.2	11.6	12.0	12.6	13.1	13.7	14.5	15.1	16.0	16.9	18.0
m	10.8	11.1	11.5	11.9	12.4	13.0	13.6	14.2	14.9			

## Prestazioni

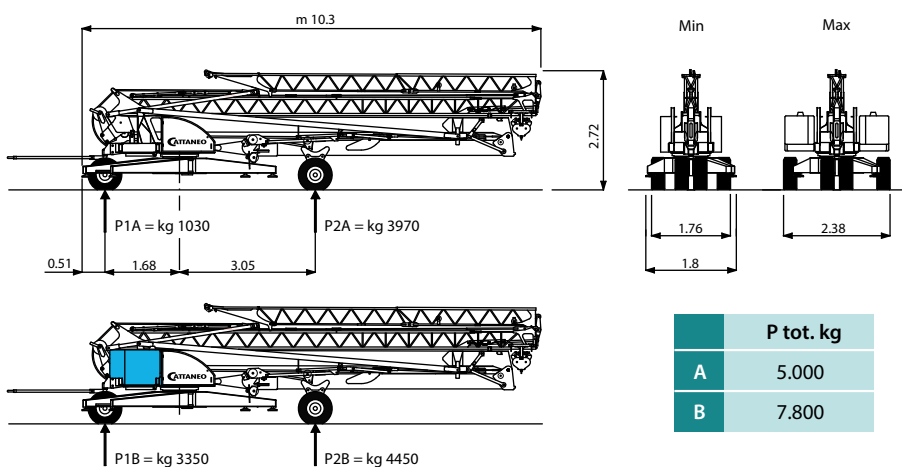
		Versione trifase				Versione monotrifase					
		400 V - 50 Hz		kVA		230/400 V - 50 Hz		kVA			
		potenza elettrica necessaria		5		potenza elettrica necessaria		 3  5			
		1°	2°	3°	kW	1°	2°	3°	kW		
	Sollevamento	m/1'	7	14	28		m/1'	7	15	21	3
		kg	1.200	1.200	700		4	kg	1.200	1.200	
	Carrello	m/1'	15 - 30 inverter		1,5		m/1'	15 - 30 inverter		1,5	
		g/1'	0 -> 0,4 -> 0,95 inverter		1,5		g/1'	0 -> 0,4 -> 0,95 inverter		1,5	

## Contrappeso in lastre di cemento armato



Massa gru (con assale da cantiere)	kg 5.000
Massa contrappeso	kg 7.300

## Trasporto



Specifiche suscettibili di variazioni senza preavviso